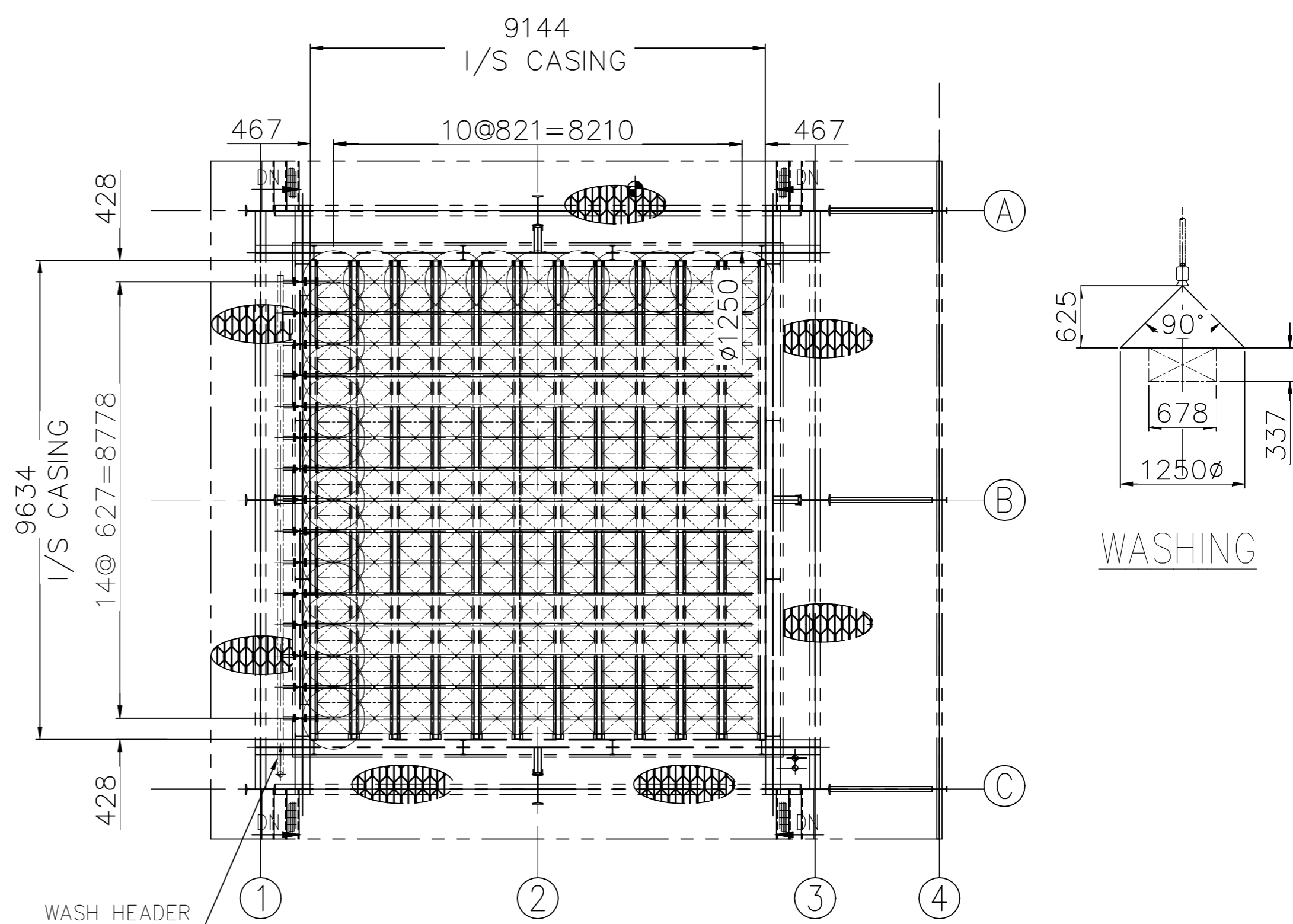
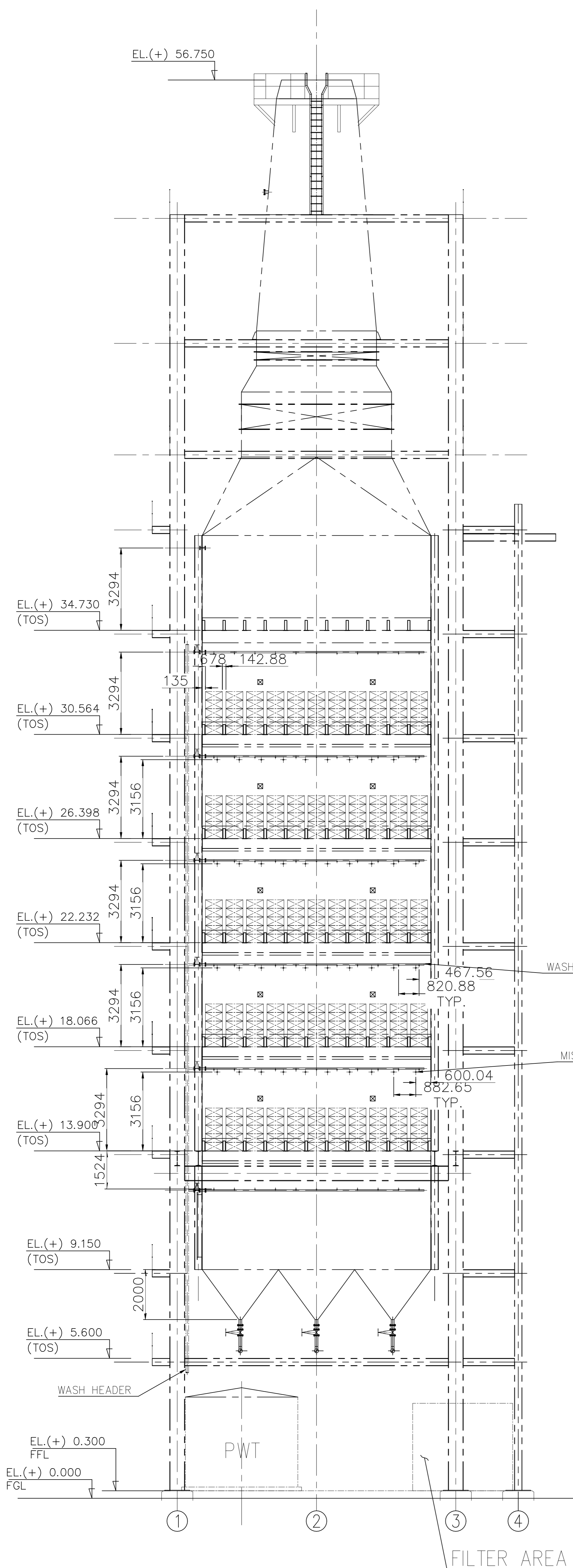
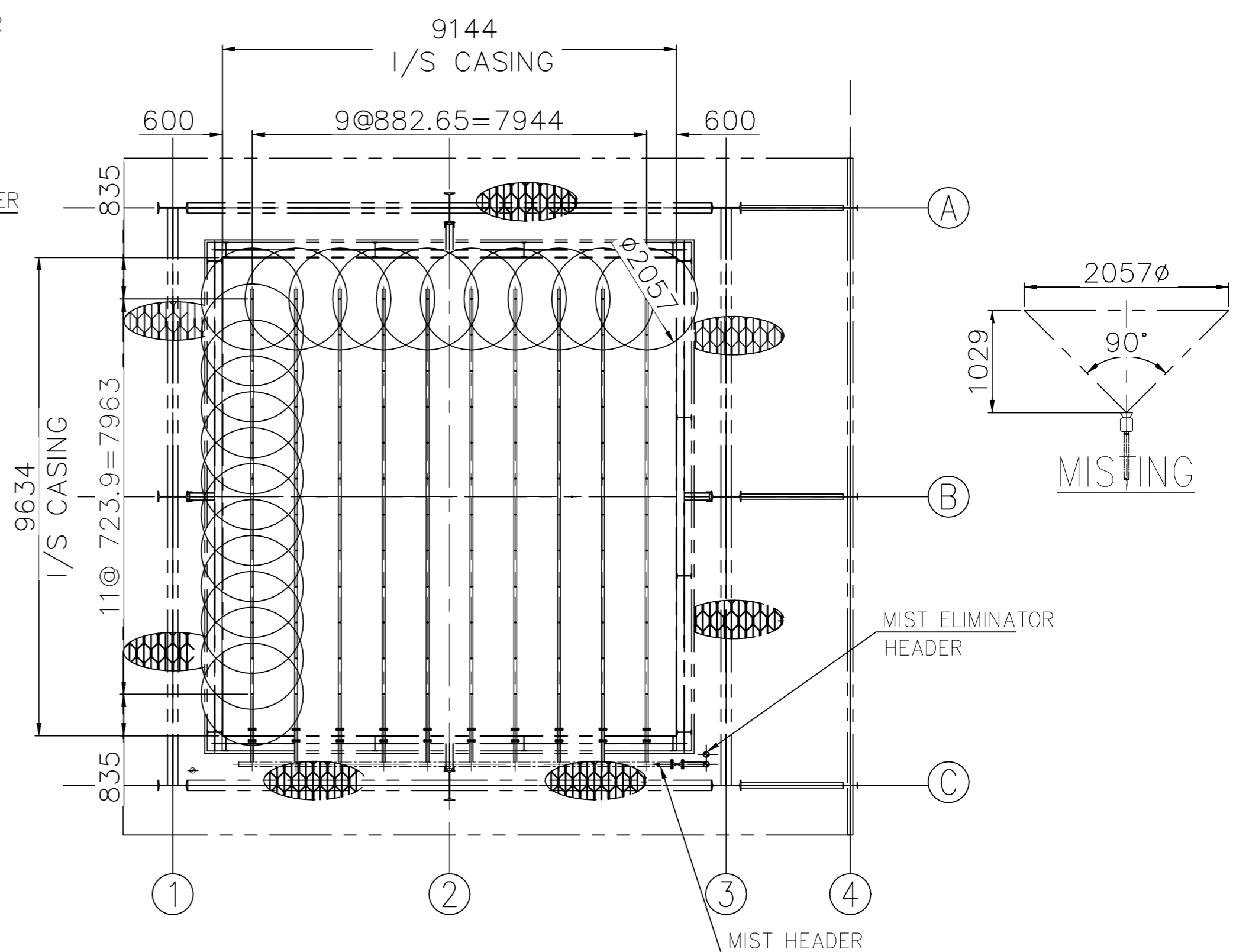


LAYOUT DRG. OF FLUE GAS TREATMENT REACTOR (FGTR)



TYPICAL PLAN FOR ONE LAYER OF WASH NOZZLES

(ONE NOZZLE FOR EACH MODULE & 165 NOS OF WASH NOZZLES IN EACH LAYER)



TYPICAL PLAN FOR ONE LAYER OF MISTING NOZZLES

(110 NOS OF MISTING NOZZLES IN EACH LAYER)

NOTE:
1. DIMENSIONS ARE IN 'MM'

TENDER DRAWING